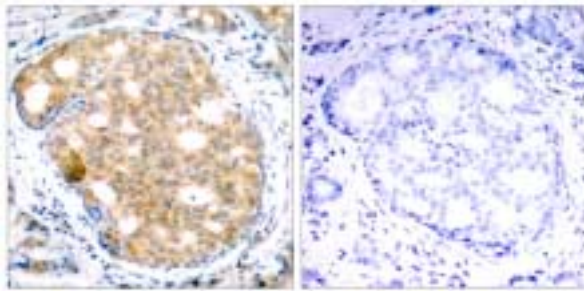


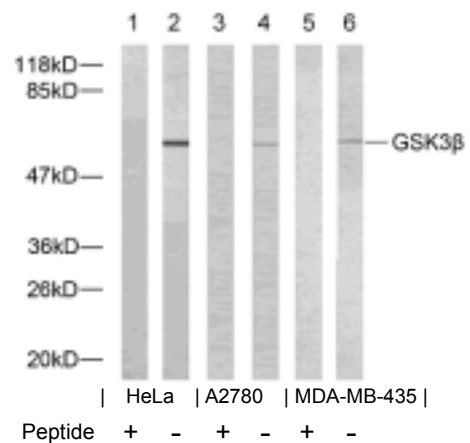
GSK3 β (Ab-9) Antibody

- Catalog Number:** 21002-1, 21002-2
Amount: 50 μ g/50 μ l, 100 μ g/100 μ l
Form of Antibody: Rabbit IgG in phosphate buffered saline (without Mg²⁺ and Ca²⁺), pH 7.4, 150mM NaCl, 0.02% sodium azide and 50% glycerol.
Storage/Stability: Store at -20 \square /1 year
Immunogen: The antiserum was produced against synthesized non-phosphopeptide derived from human GSK3 β around the phosphorylation site of serine 9 (T-T-S^P-F-A).
Purification: The antibody was affinity-purified from rabbit antiserum by affinity-chromatography using epitope-specific immunogen.
Specificity/Sensitivity: GSK3 β (Ab-9) antibody detects endogenous levels of total GSK3 β protein.
Reactivity: Human, Mouse, Rat
Applications: WB: 1:500~1:1000 IHC: 1:50~1:100
Swiss-Prot No. : P49841
References: Fan G, et al. (2003) J Biol Chem. 278(52): 52432-52436.
 Barry FA, et al. (2003) FEBS Lett. 553(1-2): 173-178.
 Welsh, et al. (1996) Trends Cell Biol. 6: 274-279.
 Srivastava A K, et al. (1998) Mol Cell Biochem. 182: 135-141.
 Cross D. A, et al. (1995) Nature. 378: 785-789.



Peptide - +

Immunohistochemical analysis of paraffin- embedded human breast carcinoma tissue using GSK3 β (Ab-9) antibody (#21002).



Western blot analysis of extracts using GSK3 β (Ab-9) antibody (#21002).