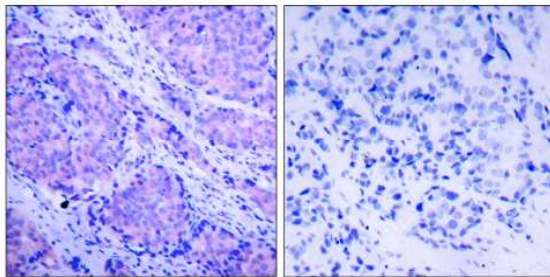


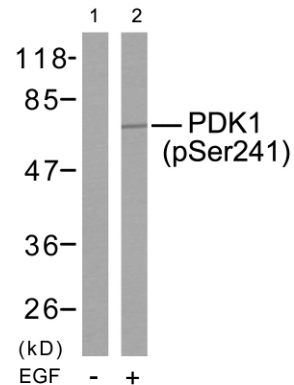
# PDK1 (Phospho-Ser241) Antibody

#11005

- Catalog Number:** 11005-1, 11005-2  
**Amount:** 50µg/50µl, 100µg/100µl  
**Form of Antibody:** Rabbit IgG in phosphate buffered saline (without Mg<sup>2+</sup> and Ca<sup>2+</sup>), pH 7.4, 150mM NaCl, 0.02% sodium azide and 50% glycerol.  
**Storage/Stability:** Store at -20°C/1 year  
**Immunogen:** The antiserum was produced against synthesized phosphopeptide derived from human PDK1 around the phosphorylation site of serine 241 (A-N-S<sup>P</sup>-F-V).  
**Purification:** The antibody was affinity-purified from rabbit antiserum by affinity-chromatography using epitope-specific phosphopeptide. The antibody against non-phosphopeptide was removed by chromatography using non-phosphopeptide corresponding to the phosphorylation site.  
**Specificity/Sensitivity:** PDK1 (phospho-Ser241) antibody detects endogenous levels of PDK1 only when phosphorylated at serine 241.  
**Reactivity:** Human, Mouse, Rat  
**Applications:** WB: 1:500~1:1000 IHC: 1:50~1:100  
**Swiss-Prot No. :** O15530  
**References:** Scheid MP, et al. (2005) Mol Cell Biol; 25(6): 2347-63  
Chen H, et al. (2001) Biochemistry; 40(39): 11851-9  
Sato S, et al. (2002) J Biol Chem; 277(42): 39360-7  
Lim MA, et al. (2003) Proc Natl Acad Sci U S A; 100(24): 14006-11



Immunohistochemical analysis of paraffin-embedded human breast carcinoma tissue using PDK1 (phospho-Ser241) antibody (#11005).



Western blot analysis of extracts from MDA-MB-435 cells using PDK1 (phospho-Ser241) antibody (#11005).

**For Research Use Only**