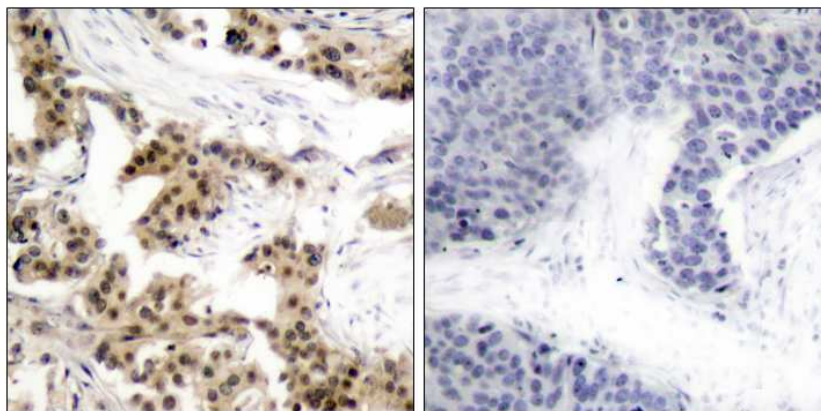


NF- κ B p105/p50 (Phospho-Ser893) Antibody

#11018

- Catalog Number:** 11018-1, 11018-2
Amount: 50 μ g/50 μ l, 100 μ g/100 μ l
Form of Antibody: Rabbit IgG in phosphate buffered saline (without Mg²⁺ and Ca²⁺), pH 7.4, 150mM NaCl, 0.02% sodium azide and 50% glycerol.
Storage/Stability: Store at -20°C/1 year
Immunogen: The antiserum was produced against synthesized phosphopeptide derived from human NF- κ B p105/p50 around the phosphorylation site of serine 893 (A-S-S^P-P-V).
Purification: The antibody was affinity-purified from rabbit antiserum by affinity-chromatography using epitope-specific phosphopeptide. The antibody against non-phosphopeptide was removed by chromatography using non-phosphopeptide corresponding to the phosphorylation site.
Specificity/Sensitivity: NF- κ B p105/p50 (phospho-Ser893) antibody detects endogenous levels of NF- κ B p105/p50 only when phosphorylated at serine 893.
Reactivity: Human
Applications: WB: 1:500~1:1000 IHC: 1:50~1:100
Swiss-Prot No. : P19838
References: Hou S, et al. (2003) J Biol Chem. 278(46): 45994-45998.
Baeuerle P A, et al. (1994) Annu Rev Immunol. 12:141-179.
Baeuerle P A, et al. (1996) Cell 87:13-20.
Haskill S, et al. (1991) Cell 65:1281-1289.



P-Peptide

-

+

Immunohistochemical analysis of paraffin-embedded human breast carcinoma tissue using NF- κ B p105/p50 (phospho-Ser893) antibody (#11018).

For Research Use Only