

JunB (Phospho-Ser259) Antibody

#11027

Catalog Number: 11027-1, 11027-2

Amount: 50µg/50µl, 100µg/100µl

Form of Antibody: Rabbit IgG in phosphate buffered saline (without Mg²⁺ and Ca²⁺), pH 7.4, 150mM NaCl, 0.02% sodium azide and 50% glycerol.

Storage/Stability: Store at -20°C/1 year

Immunogen: The antiserum was produced against synthesized phosphopeptide derived from human JunB around the phosphorylation site of serine 259 (P-V-S^P-P-I).

Purification: The antibody was affinity-purified from rabbit antiserum by affinity-chromatography using epitope-specific phosphopeptide. The antibody against non-phosphopeptide was removed by chromatography using non-phosphopeptide corresponding to the phosphorylation site.

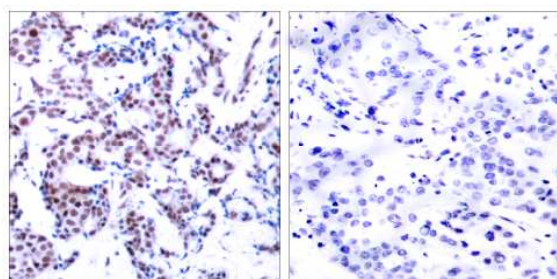
Specificity/Sensitivity: JunB (phospho-Ser259) antibody detects endogenous levels of JunB only when phosphorylated at serine 259.

Reactivity: Human, Mouse, Rat

Applications: WB: 1:500~1:1000 IHC: 1:50~1:100

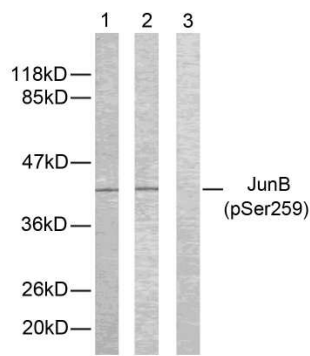
Swiss-Prot No. : P17275

References: Beausoleil S A, et al. (2004) Proc Natl Acad Sci U S A. 101(33): 12130-12135.



P-Peptide - +

Immunohistochemical analysis of paraffin-embedded breast carcinoma using JunB (phospho-Ser259) antibody (#11027).



P-Peptide - - +
Peptide - + -

Western blot analysis of extracts from HeLa cells using JunB (phospho-Ser259) antibody (#11027).

For Research Use Only